

EBS® 1500 Series

Modular Ink-Jet Controllers



EBS®
Ink-Jet Systems

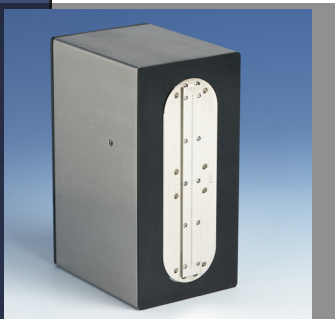
EBS® 1500 Series



EM-Printhead Small
(7 nozzles)



EM-Printhead Large
(32 nozzles)



EM-Printhead Large
(64 nozzles)



Piezo Printhead Large
(352 nozzles)

Modular controllers for large-character printing

EBS 1500 Series units provide precise, modular control for a variety of large-character printheads.

These LCP controllers can support up to six printheads, including those that utilize electromagnetic (EM) valvejet or piezo technologies.

The EBS 1500 Series features leading-edge electronics encased inside rugged steel housings, and includes on-board software that makes it easy to create and print alphanumeric text, bar codes and graphic images without the use of a computer.

High-quality printheads

The EBS 1500 Series controls large-character EM printheads that feature from seven to 64 dots to provide print heights ranging from 5mm to 115mm. EM units use solvent-based inks that adhere well to non-porous surfaces, including metal, glass, plastic and more.

In addition, the controllers handle piezo printheads that contain up to 352 dots and allow print heights between 10mm and 48mm. These printheads and their Glycol-based inks are recommended for porous substrates like corrugated, paperboard, textiles and wood.

High-quality inks are available in a number of pigments, and address various food-grade, security and other uses. An EBS representative can recommend the right combination of controller, printheads and ink for any application.



EBS® 1500 Series Specifications

Controller

Printhead: Maximum of 6
Matrix: 5x5, 7x5, 9x5, 9x7, 11x8, 12x6, 2x7, 14x9, 16x10, 16x14, 21x15, 25x15, 32x18, 64x36
Memory: 1024 texts; 256KB

EM Printheads

Nozzles: 7, 16, 25, 32, 64
Character Size: 5mm to 115mm
Head Position: Any
Ink: Water-, Ethanol-, Acetone-, MEK-based
Distance to Object: 2mm to 20mm
Print Speed: Dependent on matrix

Piezo Printheads

Nozzles: 192, 352
Character Size: 10mm to 48mm
Head Position: Horizontal
Ink: Glycol-based
Distance to Object: Less than 4mm
Print Speed: Maximum of 2 meters/second



EBS
Ink-Jet Systems

EBS Ink-Jet Systems USA, Inc.
1840 Industrial Drive, Suite 200
Libertyville, IL 60048
Phone: 1-847-996-0739 Fax: 1-847-996-0843
Email: america@ebs-inkjet.com
www.ebs-inkjet.com

Distributor:



1244 Speers Road,
Unit 15
Oakville, ON L6L 2X4

Ph: 905-827-6695
Email: res.services@resservices.ca

www.resservices.ca

Printed in U.S.A.
September 2009